

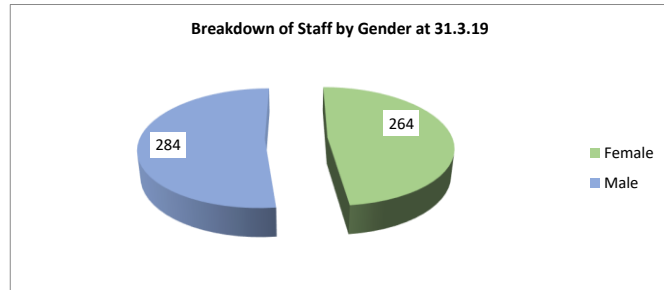
# BASSETLAW DISTRICT COUNCIL

## THE MAKE-UP OF OUR WORKFORCE

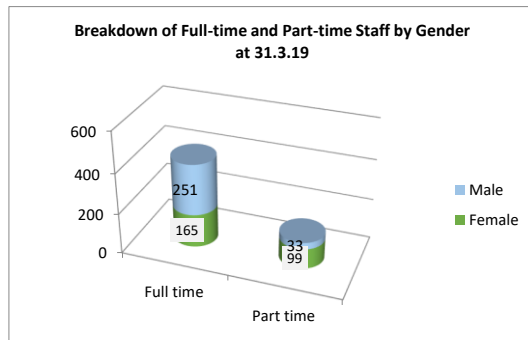


### Employees by Gender

	Male	Female
All employees at 31.03.19	51.82%	48.18%
All employees at 31.03.18	50.61%	49.39%
All employees at 31.03.17	52.78%	47.22%
All employees at 31.03.16	53.28%	46.72%
All employees at 31.03.15	51.87%	48.13%
All employees at 31.03.14	49.76%	50.24%
All employees at 31.03.13	49.76%	50.24%
All employees at 31.03.12	50.78%	49.22%
All employees at 31.03.11	51.04%	48.96%
All employees at 31.03.10	46.57%	53.43%



### Employees by Gender & Hours



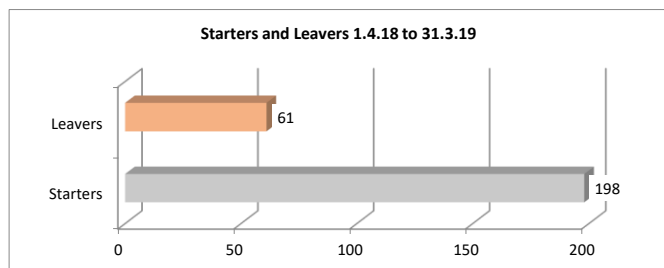
Year	Full Time			Part Time		
	Male	Female	Total	Male	Female	Total
2019	251	165	416	33	99	132
2018	179	114	293	29	89	118
2017	181	104	285	28	83	111
2016	178	99	277	33	86	119
2015	177	98	275	31	95	126
2014	181	99	280	24	108	132
2013	184	102	286	24	108	132
2012	197	113	310	30	107	137
2011	216	119	335	28	115	143
2010	213	118	331	73	210	283

### Number of staff joining and leaving the Council

	2018/19	2017/18	2016/17	2015/16	2014/15
Starters	198	75	33	48	33
Leavers	61	59	35	50	41

	2013/14	2012/13	2011/12	2010/11	2009/10
Starters	14	22	23	35	75
Leavers	23	48	59	27	191

Starters in 2018/19 includes 150 staff transferred under TUPE from A1 Housing



## Age Profile of Employees

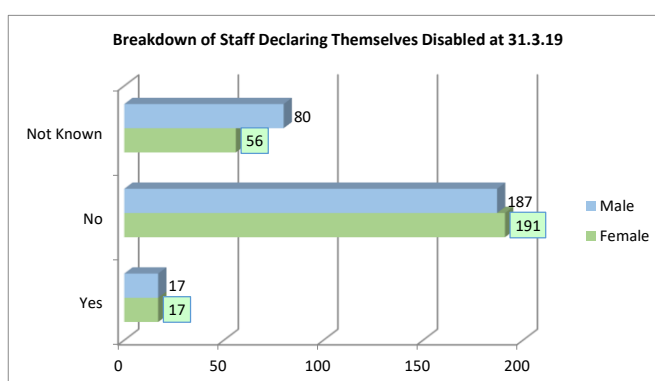


% of Staff in age range							
Year	16-17	18-24	25-34	35-44	45-54	55-64	65+
2019	0.00%	5.29%	10.77%	13.50%	35.22%	31.75%	3.47%
2018	0.00%	3.89%	8.03%	17.52%	40.63%	27.74%	2.19%
2017	0.00%	3.28%	8.08%	22.22%	36.87%	26.52%	3.03%
2016	0.25%	3.03%	8.84%	23.74%	36.36%	25.51%	2.27%
2015	0.00%	1.75%	10.47%	22.44%	39.15%	24.44%	1.75%
2014	0.00%	1.70%	12.62%	22.82%	35.68%	24.76%	2.43%
2013	0.00%	1.67%	13.88%	23.92%	34.93%	23.92%	1.67%
2012	0.00%	1.34%	14.54%	26.85%	33.11%	23.49%	0.67%
2011	0.00%	2.72%	14.01%	26.36%	29.08%	25.52%	2.31%
2010	1.72%	11.93%	12.72%	23.39%	25.91%	22.13%	2.20%

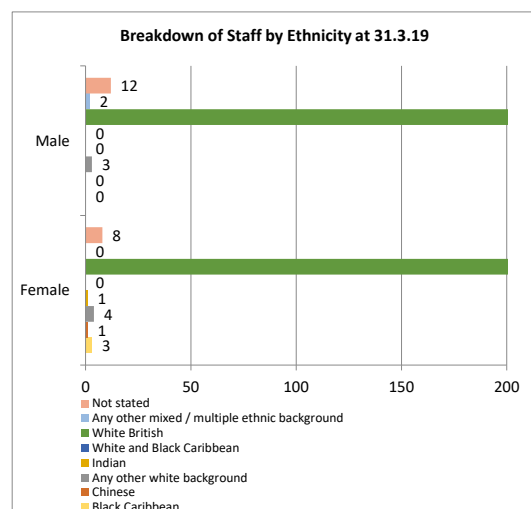
## Employees Declaring Themselves as Disabled

As at:	Male	Female	All
31.3.19	4.13%	4.13%	8.25%
31.3.18	4.84%	3.76%	8.60%
31.3.17	4.50%	3.70%	8.20%
31.3.16	5.77%	3.85%	9.62%
31.3.15	4.17%	3.13%	7.29%
31.3.14	4.59%	3.57%	8.16%
31.3.13	4.80%	3.54%	8.33%
31.3.12	4.70%	4.02%	8.72%
31.3.11	4.40%	3.76%	8.16%
31.3.10	4.35%	2.83%	7.18%

Figures are calculated as a % of those employees who have declared whether or not they are disabled.



## Ethnicity of Employees



As at:	Male	Female	All
31.3.19	0.38%	0.95%	1.33%
31.3.18	0.25%	1.02%	1.27%
31.3.17	0.26%	1.05%	1.31%
31.3.16	0.00%	1.01%	1.01%
31.3.15	0.26%	0.78%	1.04%
31.3.14	0.25%	0.51%	0.76%
31.3.13	0.25%	0.75%	1.00%
31.3.12**	0.47%	0.94%	1.41%
31.3.11**	44.00%	0.66%	1.10%
31.3.10	0.45%	1.83%	2.28%

\*Staff are considered to be from an ethnic minority group if they define themselves as being from census classification b, c, d or e, that is:

b. (i) White and Black Caribbean(ii) White and Black African(iii) White and Asian(iv) Any other mixed background

c. Asian or Asian British(i) Indian(ii) Pakistani(iii) Bangladeshi(iv) Any other Asian background

d. Black or Black British(i) Caribbean(ii) African(iii) Any other Black background

e. Chinese or Other ethnic group(i) Chinese(ii) Other

\*\*Figures at 31.3.12 have been adjusted from those reported the previous year to count only those in the classifications listed above, calculated as a % of staff who have declared an ethnic group