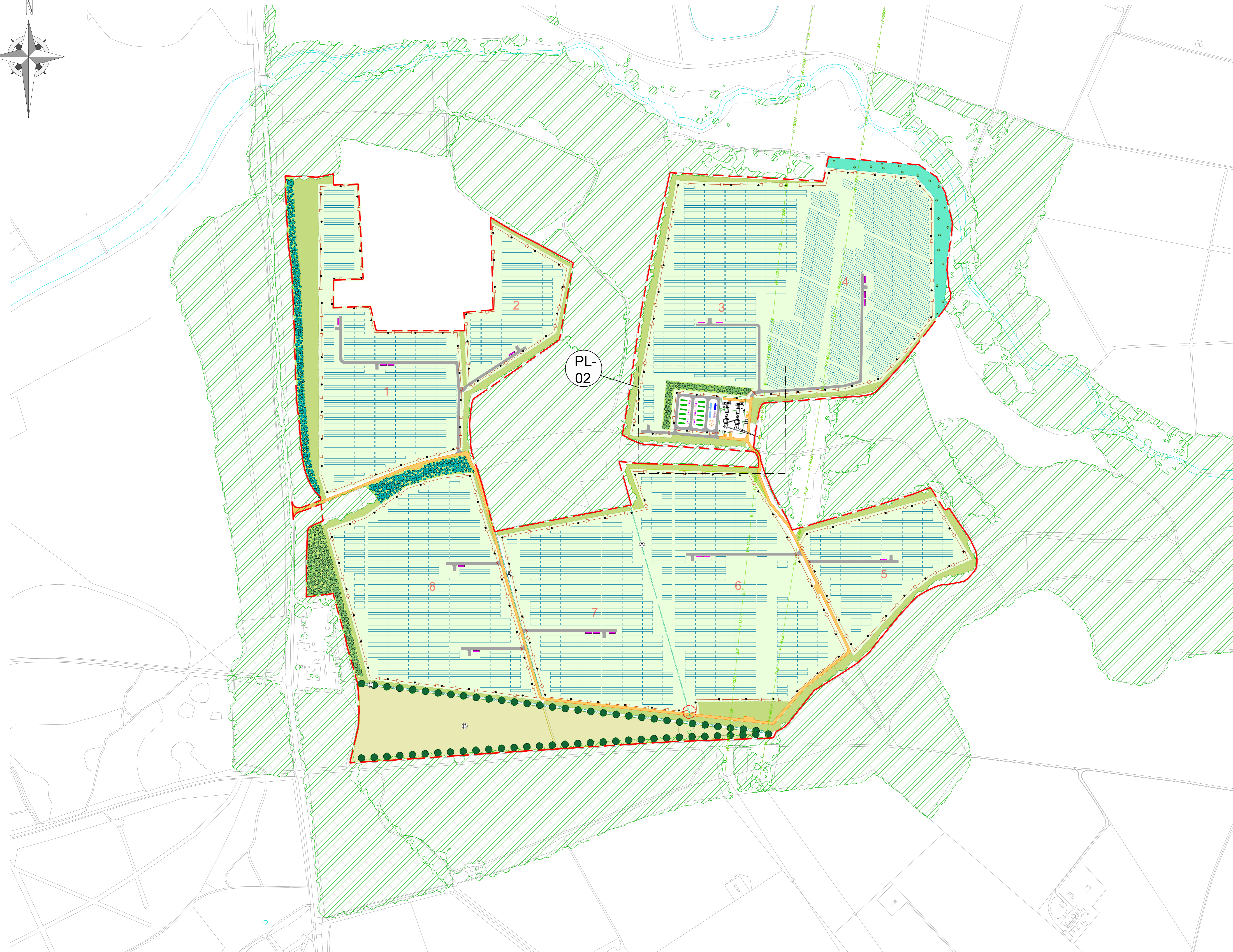
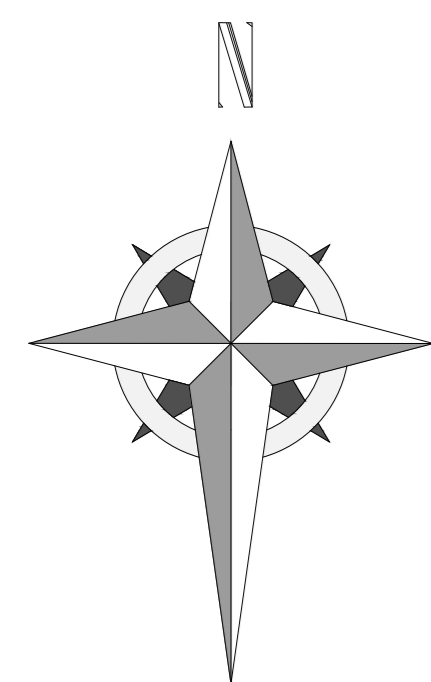


This drawing is the copyright of ONE PLANET DEVELOPMENTS LIMITED and must not be reproduced in whole or in part or used in any manner without their written permission.
Scaled dimensions must not be taken from this drawing. All dimensions are to be confirmed on site prior to commencement of work.



Revisions:

Revision	Date	Revision Notes	Drawn	Inspected
01	04.03.24	First Issue	EM	JW
02	08.03.24	Layout Updated	JW	JW
03	12.03.24	Layout Updated	JW	JW
04	14.03.24	Layout Updated	JW	JW
05	15.03.24	Layout Updated	CS	JW
06	19.03.24	Panel Spec Updated	CS	JW
07	26.03.24	Tracts and RLs Amended	EM	JW
08	12.07.24	Layout Updated	RR	JW
09	16.08.24	Layout Updated	RR	JW
10	29.08.24	Vegetation Added & Amended	CS	JW

LEGEND:

- - - - - PLANNING APPLICATION BOUNDARY
- — — — — DNO ACCESS
- — — — — NEW ACCESS TRACK
- — — — — WATER COURSE
- - - - - PERIMETER FENCELINE
- - - - - PALISADE FENCE
- — — — — HV 400kV — ELE — HV 400kV — OIH 400kV CABLE — HV 400kV — ELE — HV 400kV
- — — — — HV 132kV — ELE — HV 132kV — OIH 132kV CABLE — HV 132kV — ELE — HV 132kV

SITE INFRASTRUCTURE:

- SECURITY GATE
- CCTV CAMERA
- POINT OF CONNECTION
- SOLAR ARRAY
- 132KV SUBSTATION
- WATER TANK
- LATTICE TOWER
- MV POWER STATION
- CUSTOMER SWITCHGEAR
- SPARE PARTS CONTAINER
- WELFARE CABIN
- BESS CONTAINER
- POWER CONVERSION SYSTEM
- TRANSFORMER
- HYDRANT

ENVIRONMENT:

- EXISTING VEGETATION
- WOODLAND PLANTING
- PROPOSED SCRUB PLANTING
- PROPOSED HEDGE / HORSE CHESTNUT TREES
- HORSE CHESTNUT TREES
- HISTORIC HEDGE REINSTATED/REINFORCED
- SPECIES RICH MEADOW FOR SANDY SOIL
- TUSsocky GRASSLAND
- RIPARIAN SCRUB WITH TUSsocky SPECIES RICH MEADOW
- AGRICULTURAL FIELD
- EXISTING VEGETATION TO BE REMOVED

Note: See Planting Plan and LEMP for full details

Project:

Land Adjacent to the A614, Worksp, S80 3PA

Consultant:



©2020-2022 by One Planet Developments Limited
Biddesgate Farm, Wimborne, Dorset BH21 5RS

Drawn by:



CADmando Design & Draughting Solutions Ltd
The Long Barn, The Courtyard, Severn Drive, Tewkesbury
Business Park, GL20 8GD
Tel: +44 (0) 1684 850019
Mob: +44 (0) 7814439910

Status:

PLANNING

Drawing Title:

Proposed Site Layout Plan

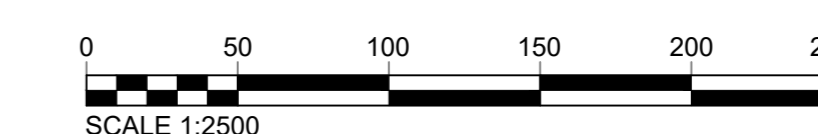
Drawn:	Checked:	First Issued:
EM	JW	04.03.2024

Project Code: **OPL011- PL-01** Drawing Number:

Sheet Size: **A0** Scale: **1:2500** Revision: **10**

1 NORMANTON LARCHES PROPOSED SITE LAYOUT PLAN

Scale: 1:2500@A0



This drawing is the copyright of ONE PLANET DEVELOPMENTS LIMITED and must not be reproduced in whole or in part or used in any manner without their written permission.
Scaled dimensions must not be taken from this drawing. All dimensions are to be confirmed on site prior to commencement of work.

Revisions:

Revision	Date	Revision Notes	Drawn	Inspected
01	04.03.24	First Issue	EM	JW
02	08.03.24	Layout Updated	EM	JW
03	12.03.24	Layout Updated	JC	JW
04	14.03.24	Layout Updated	JC	JW
05	15.03.24	Layout Updated	CS	JW
06	19.03.24	Panel Spec Updated	EM	JW
07	26.03.24	Tracks and RLS Amended	EM	JW
08	12.07.24	Layout Updated	RR	JW
09	16.08.24	Layout Updated	RR	JW
10	29.08.24	Vegetation Added & Amended	CS	JW
11	19.11.25	Vegetation Amended	HL	MC
12	19.11.25	Vegetation Added & Amended	HL	MC
	26.11.25	Gap for existing track reintroduced	RR	MC

LEGEND:

- PLANNING APPLICATION BOUNDARY
- DNO ACCESS
- NEW ACCESS TRACK
- WATER COURSE
- PERIMETER FENCELINE
- PALISADE FENCE
- HV 400kV - ELE - HV 400kV - OH 400kV CABLE - HV 400kV - ELE - HV 400kV
- HV 132kV - ELE - HV 132kV - OH 132kV CABLE - HV 132kV - ELE - HV 132kV

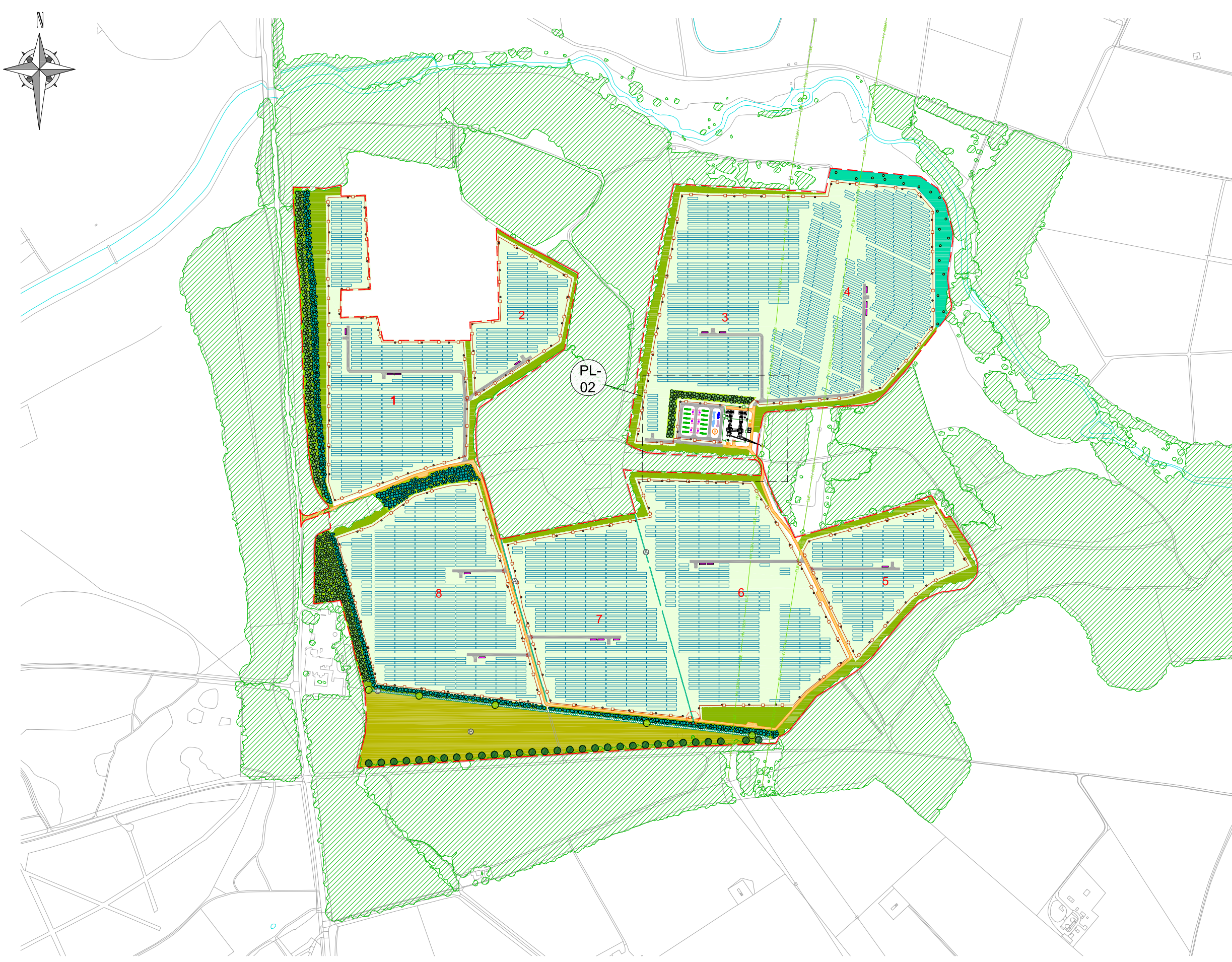
SITE INFRASTRUCTURE:

- SECURITY GATE
- CCTV CAMERA
- POINT OF CONNECTION
- SOLAR ARRAY
- 132kV SUBSTATION
- WATER TANK
- LATTICE TOWER
- MV POWER STATION
- CUSTOMER SWITCHGEAR
- SPARE PARTS CONTAINER
- WELFARE CABIN
- BESS CONTAINER
- POWER CONVERSION SYSTEM
- TRANSFORMER
- HYDRANT

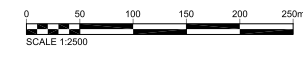
ENVIRONMENT:

- EXISTING VEGETATION
- WOODLAND PLANTING
- PROPOSED SCRUB PLANTING
- PROPOSED MIXED SPECIES HEDGEROW AND SPECIMEN TREES
- HORSE CHESTNUT TREES
- HISTORIC HEDGE REINSTATED/REINFORCED
- SPECIES RICH MEADOW FOR SANDY SOIL
- TUSSOCKY GRASSLAND
- RIPARIAN SCRUB WITH TUSSOCKY SPECIES RICH MEADOW
- AGRICULTURAL FIELD
- EXISTING VEGETATION TO BE REMOVED

Note: See Planting Plan and LEMP for full details



1 NORMANTON LARCHES PROPOSED SITE LAYOUT PLAN
Scale: 1:2500@A0



Project:
Land Adjacent to the A614, Worksp, S80 3PA

Consultant:

©2020-2022 by One Planet Developments Limited
Buddlegate Farm, Wimborne, Dorset BH21 5RS

Drawn by:

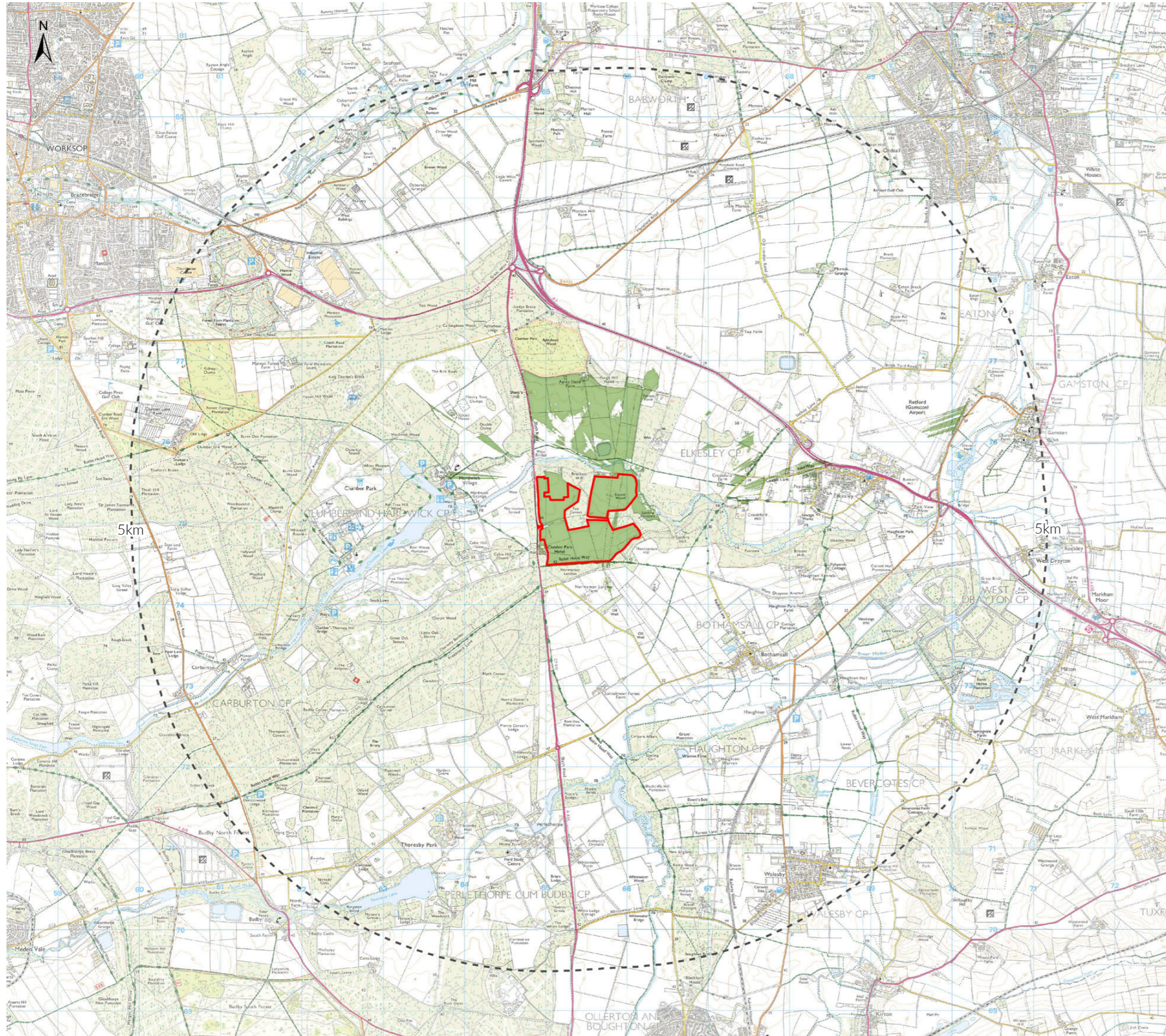
CADmando Design & Draughting Solutions Ltd
The Long Barn, The Courtyard, Severn Drive, Tewkesbury
Business Park, GL20 9GD
Tel: +44 (0) 1854 550919
Mob: +44 (0) 7814436910

Status:
PLANNING

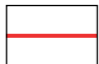


Drawing Title:
Proposed Site Layout Plan

Drawn: EM	Checked: JW	First Issued: 04.03.2024
Project Code: OPL011- PL-01		Drawing Number:
Sheet Size: A0	Scale: 1:2500	Revision: 12

Normanton Solar | Zone of Theoretical Visibility (ZTV) with exclusions

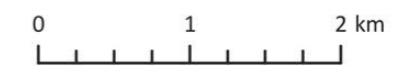


Legend

-  Site boundary
-  5km radial extent
-  Zone of Theoretical Visibility (ZTV)

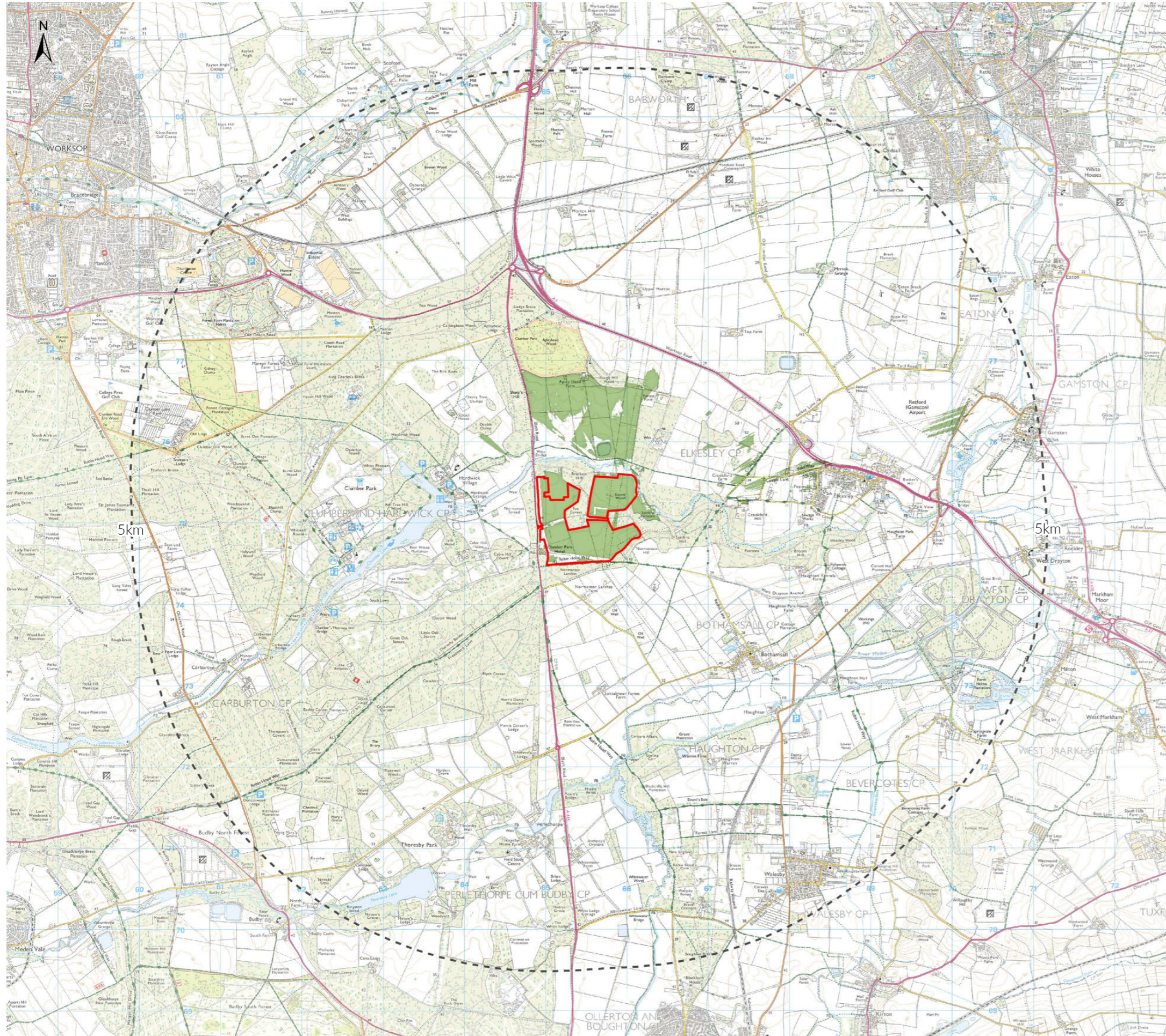
The ZTV is generated from a receptor height of 1.6m (average eye level) and a receiver heights of up to 3m (maximum pv array height) and 6.7m (maximum substation height) above existing ground level. Multiple targets were placed within the site to best represent points that may be visible.

This ZTV is based on 5m LiDAR 'First Return' DSM (Digital Surface Model) terrain data which includes intervening features such as existing trees/ vegetation and buildings in the landscape. Some changes within the landscape may have occurred since the DSM data and ZTV was created. Data source; data.gov.uk. This ZTV also includes Earth's curvature.

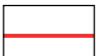




Scale 1 : 50,000 @ A3

Blyth Road Solar | Zone of Theoretical Visibility (ZTV) with proposed planting



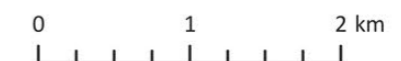
Legend

-  Site boundary
-  5km radial extent
-  Zone of Theoretical Visibility (ZTV)

The ZTV is generated from a receptor height of 1.6m (average eye level) and a receiver heights of up to 3m (maximum pv array height) and 6.7m (maximum substation height) above existing ground level. Proposed planting has been added to include new hedgerows at 3m high, scrub planting at 3.5m high and woodland trees at 7m high. Multiple targets were placed within the site to best represent points that may be visible.

This ZTV is based on 5m LiDAR 'First Return' DSM (Digital Surface Model) terrain data which includes intervening features such as existing trees/ vegetation and buildings in the landscape. Some changes within the landscape may have occurred since the DSM data and ZTV was created. Data source: data.gov.uk. This ZTV also includes Earth's curvature.

Proposed hedges have been modeled at 3m high, proposed scrub at 3.5m high and proposed woodland at 7m high in the locations shown on the Planting Plan 571_PP_01_Rev C, Sightline Landscape.



Scale 1 : 50,000 @ A3

LANDSCAPE AND VISUAL IMPACT ASSESSMENT METHODOLOGY



Contents.

1. Landscape and Visual Impact Assessment Methodology.....	1
2. Effects on Landscape Elements.....	4
3. Effects on Landscape Character.....	7
4. Effects on Visual Amenity.....	8
5. Significance of Landscape And Visual Effects.....	10
6. Typical Descriptors of Landscape Effects.....	11
7. Typical Descriptors of Visual Effects.....	12
8. Nature of Effects.....	13

1. Landscape and Visual Impact Assessment Methodology

- 1.1. The Analysis is based on this methodology which has been undertaken with regards to best practice as outlined within the following publications:
- Guidelines for Landscape and Visual Impact Assessment (3rd Edition, 2013) – Landscape Institute / Institute of Environmental Management and Assessment;
 - Notes and Clarifications on Aspects of Guidelines for Landscape and Visual Impact Assessment Third Edition (GLVIA3) – Technical Guidance Note LITGN-2024-01 (2024);
 - Visual Representation of Development Proposals (2019) – Landscape Institute Technical Guidance Note 06/19;
 - An Approach to Landscape Character Assessment (2014) – Natural England;
 - An Approach to Landscape Sensitivity Assessment – To Inform Spatial Planning and Land Management (2019) – Natural England.
 - Reviewing Landscape Visual Impact Assessments (LVIAs and Landscape and Visual appraisals (LVAs) Technical Guidance Note 1/20 Landscape Institute.
 - Assessing Landscape Value Outside National Designations, Technical Guidance Note 02/21 – Landscape Institute (2021).
- 1.2. GLVIA3 states within paragraph 1.1 that “Landscape and Visual Impact Assessment (LVIA) is a tool used to identify and assess the significance of and the effects of change resulting from development on both the landscape as an environmental resource in its own right and on people’s views and visual amenity.”¹
- 1.3. GLVIA3 also states within paragraph 1.17 that when identifying landscape and visual effects there is a “need for an approach that is in proportion to the scale of the project that is being assessed and the nature of the likely effects. Judgement needs to be exercised at all stages in terms of the scale of investigation that is appropriate and proportional.”²
- 1.4. GLVIA3 recognises within paragraph 2.23 that “professional judgement is a very important part of LVIA. While there is some scope for quantitative measurement of some relatively objective matters much of the assessment must rely on qualitative judgements”³ undertaken by a landscape consultant or a Chartered Member of the Landscape Institute (CMLI).
- 1.5. GLVIA3 notes in paragraph 1.3 that “LVIA may be carried out either formally, as part of an Environmental Impact Assessment (EIA), or informally, as a contribution to the ‘appraisal’ of development proposals and planning applications”⁴ Although the proposed development is not subject to an EIA requiring an assessment of the likely significance of effects, this

¹ Para 1.1, Page 4, GLVIA, 3rd Edition

² Para 1.17, Page 9, GLVIA, 3rd Edition

³ Para 2.23, Page 21, GLVIA, 3rd Edition

⁴ Para 1.3, Page 4, GLVIA, 3rd Edition

assessment is also titled as an LVIA rather than an ‘appraisal’ in the interests of common understanding with other planning consultants.

1.6. The effects on cultural heritage and ecology are not considered within this LVIA.

Study Area

1.7. The study area for this LVIA covers a 3km radius from the site. However, the main focus of the assessment was taken as a radius of 1km from the site as it is considered that even with clear visibility the proposals would not be perceptible in the landscape beyond this distance.

Effects Assessed

1.8. Landscape and visual effects are assessed through professional judgements on the sensitivity of landscape elements, character and visual receptors combined with the predicted magnitude of change arising from the proposals. The landscape and visual effects have been assessed in the following sections:

- Effects on landscape elements;
- Effects on landscape character; and
- Effects on visual amenity.

1.9. Sensitivity is defined in GLVIA3 as “a term applied to specific receptors, combining judgments of susceptibility of the receptor to a specific type of change or development proposed and the value related to that receptor.”⁵ Various factors in relation to the value and susceptibility of landscape elements, character, visual receptors or representative viewpoints are considered below and cross referenced to determine the overall sensitivity as shown in Table 1:

Table 1, Overall sensitivity of landscape and visual receptors

		VALUE		
		HIGH	MEDIUM	LOW
SUSCEPTIBILITY	HIGH	High	High	Medium
	MEDIUM	High	Medium	Medium
	LOW	Medium	Medium	Low

1.10. Magnitude of change is defined in GLVIA3 as “a term that combines judgements about the size and scale of the effect, the extent over which it occurs, whether it is reversible or irreversible and whether it is short or long term in duration.”⁶ Various factors contribute to

⁵ Glossary, Page 158, GLVIA, 3rd Edition

⁶ Glossary, Page 158, GLVIA, 3rd Edition



the magnitude of change on landscape elements, character, visual receptors and representative viewpoints.

- 1.11. The sensitivity of the landscape and visual receptor and the magnitude of change arising from the proposals are cross referenced in Table 11 to determine the overall degree of landscape and visual effects.

2. Effects on Landscape Elements

2.1. The effects on landscape elements includes the direct physical change to the fabric of the land, such as the removal of woodland, hedgerows or grassland to allow for the proposals.

Sensitivity of Landscape Elements

2.2. Sensitivity is determined by a combination of the value that is attached to a landscape element and the susceptibility of the landscape element to changes that would arise as a result of the proposals – see pages 88–90 of GLVIA3. Both value and susceptibility are assessed on a scale of high, medium or low.

2.3. The criteria for assessing the value of landscape elements and landscape character is shown in Table 2:

Table 2, Criteria for assessing the value of landscape elements and landscape character

HIGH	<p>Designated landscape including but not limited to World Heritage Sites, National Parks, National Landscapes (formerly Areas of Outstanding Natural Beauty) considered to be an important component of the country's character or non-designated landscape of a similar character and quality.</p> <p>Landscape condition is good and components are generally maintained to a high standard.</p> <p>In terms of seclusion, enclosure by land use, traffic and movement, light pollution and absence of major built infrastructure, the landscape has an elevated level of tranquility.</p> <p>Rare or distinctive landscape elements and features are key components that contribute to the landscape character of the area.</p>
MEDIUM	<p>Undesignated landscape including urban fringe and rural countryside considered to be a distinctive component of the national or local landscape character.</p> <p>Landscape condition is fair and components are generally well maintained.</p> <p>In terms of seclusion, enclosure by land use, traffic and movement, light pollution and some major built infrastructure, the landscape has a moderate level of tranquility.</p> <p>Rare or distinctive landscape elements and features are notable components that contribute to the character of the area.</p>
LOW	<p>Undesignated landscape including urban fringe and rural countryside considered to be of unremarkable character.</p> <p>Landscape condition may be poor and components poorly maintained or damaged.</p> <p>In terms of seclusion, enclosure by land use, traffic and movement, light pollution and significant major built infrastructure, the landscape has limited levels of tranquility.</p> <p>Rare or distinctive elements and features are not notable components that contribute to the landscape character of the area.</p>

2.4. The criteria for assessing the susceptibility of landscape elements and landscape character is shown in Table 3:

Table 3, Criteria for assessing landscape susceptibility

HIGH	<p>Scale of enclosure – landscapes with a low capacity to accommodate the type of development being proposed owing to the interactions of topography, vegetation cover, built form, etc.</p> <p>Nature of land use – landscapes with no or little existing reference or context to the type of development being proposed.</p> <p>Nature of existing elements – landscapes with components that are not easily replaced or substituted (e.g. ancient woodland, mature trees, historic parkland, etc).</p> <p>Nature of existing features – landscapes where detracting features, major infrastructure or industry is not present or where present has a limited influence on landscape character.</p>
MEDIUM	<p>Scale of enclosure – landscapes with a medium capacity to accommodate the type of development being proposed owing to the interactions of topography, vegetation cover, built form, etc.</p> <p>Nature of land use – landscapes with some existing reference or context to the type of development being proposed.</p> <p>Nature of existing elements – landscapes with components that are easily replaced or substituted.</p> <p>Nature of existing features – landscapes where detracting features, major infrastructure or industry is present and has a noticeable influence on landscape character.</p>
LOW	<p>Scale of enclosure – landscapes with a high capacity to accommodate the type of development being proposed owing to the interactions of topography, vegetation cover, built form, etc.</p> <p>Nature of land use – landscapes with extensive existing reference or context to the type of development being proposed.</p> <p>Nature of existing features – landscapes where detracting features or major infrastructure is present and has a dominating influence on the landscape.</p>

- 2.5. Various factors in relation to the value and susceptibility of landscape elements are assessed and cross referenced to determine the overall sensitivity as shown in Table 1.
- 2.6. Sensitivity is defined in GLVIA3 as “a term applied to specific receptors, combining judgments of susceptibility of the receptor to a specific type of change or development proposed and the value related to that receptor.”⁷ The definitions for high, medium, low landscape sensitivity are shown in Table 4:

⁷ Glossary, Page 158, GLVIA, 3rd Edition

Table 4, Criteria for assessing landscape sensitivity

HIGH	Landscape element or character area defined as being of high value combined with a high or medium susceptibility to change.
	Landscape element or character area defined as being of medium value combined with a high susceptibility to change.
MEDIUM	Landscape element or character area defined as being of high value combined with a low susceptibility to change.
	Landscape element or character area defined as being of medium value combined with a medium or low susceptibility to change.
	Landscape element or character area defined as being of low value combined with a high or medium susceptibility to change.
LOW	Landscape element or character area defined as being of low value combined with a low susceptibility to change.

Magnitude of Change on Landscape Elements

- 2.7. Professional judgement has been used to determine the magnitude of change on individual landscape elements within the site as shown in Table 5:

Table 5, Criteria for assessing magnitude of change for landscape elements

HIGH	Substantial loss/gain of a landscape element.
MEDIUM	Partial loss/gain or alteration to part of a landscape element.
LOW	Minor loss/gain or alteration to part of a landscape element.
NEGLIGIBLE	No loss/gain or very limited alteration to part of a landscape element.

3. Effects on Landscape Character

- 3.1. Landscape character is defined as the “distinct, recognisable and consistent pattern of elements in the landscape that makes one landscape different from another, rather than better or worse.”⁸
- 3.2. The assessment of effects on landscape character considers how the introduction of new landscape elements physically alters the landform, landcover, landscape pattern and perceptual attributes of the site or how visibility of the proposals changes the way in which the landscape character is perceived.

Sensitivity of Landscape Character

- 3.3. Sensitivity is determined by a combination of the value that is attached to a landscape and the susceptibility of the landscape to changes that would arise as a result of the proposals – see pages 88–90 of GLVIA3. Both value and susceptibility are assessed on a scale of high, medium or low.
- 3.4. The criteria for assessing the value of landscape character is shown in Table 2.
- 3.5. The criteria for assessing the susceptibility of landscape character is shown in Table 3.
- 3.6. The overall sensitivity is determined through cross referencing the value and susceptibility of landscape character as shown in Table 1.

Magnitude of Change on Landscape Character

- 3.7. Professional judgement has been used to determine the magnitude of change on landscape character as shown in Table 6:

Table 6, Criteria for assessing magnitude of change on landscape character

HIGH	Introduction of major new elements into the landscape or some major change to the scale, landform, landcover or pattern of the landscape.
MEDIUM	Introduction of some notable new elements into the landscape or some notable change to the scale, landform, landcover or pattern of the landscape.
LOW	Introduction of minor new elements into the landscape or some minor change to the scale, landform, landcover or pattern of the landscape.
NEGLIGIBLE	No notable or appreciable introduction of new elements into the landscape or change to the scale, landform, landcover or pattern of the landscape.

⁸ Glossary, Page 157, GLVIA, 3rd Edition

4. Effects on Visual Amenity

4.1. Visual amenity is defined within GLVIA3 as the “overall pleasantness of the views people enjoy of their surroundings, which provides an attractive visual setting or backdrop for the enjoyment of activities of the people living, working, recreating, visiting or travelling through an area.”⁹

4.2. The effects on visual amenity considers the changes in views arising from the proposals in relation to visual receptors including settlements, residential properties, transport routes, recreational facilities and attractions; and representative viewpoints or specific locations within the study area as agreed with the Local Planning Authority.

Sensitivity of Visual Receptors

4.3. Sensitivity is determined by a combination of the value that is attached to a view and the susceptibility of the visual receptor to changes in that view that would arise as a result of the proposals – see pages 113–114 of GLVIA3. Both value and susceptibility are assessed on a scale of high, medium or low.

4.4. The criteria for assessing the value of views are shown in Table 7:

Table 7, Criteria for assessing the value of views

HIGH	Views with high scenic value within designated landscapes including but not limited to World Heritage Sites, National Parks, National Landscape (formerly Areas of Outstanding Natural Beauty), etc. Likely to include key viewpoints on OS maps or reference within guidebooks, provision of facilities, presence of interpretation boards, etc.
MEDIUM	Views with moderate scenic value within undesignated landscape including urban fringe and rural countryside.
LOW	Views with unremarkable scenic value within undesignated landscape with partly degraded visual quality and detractors.

4.5. The criteria for assessing the susceptibility of views are shown in Table 8:

Table 8, Criteria for assessing visual susceptibility

HIGH	Includes occupiers of residential properties and people engaged in recreational activities in the countryside using public rights of way (PROW).
MEDIUM	Includes people engaged in outdoor sporting activities and people travelling through the landscape on minor roads and trains.
LOW	Includes people at places of work e.g. industrial and commercial premises and people travelling through the landscape on major roads and motorways.

4.6. Sensitivity is defined in GLVIA3 as “a term applied to specific receptors, combining judgments of susceptibility of the receptor to a specific type of change or development

⁹ Page 158, Glossary, GLVIA3

proposed and the value related to that receptor.”¹⁰ The definitions for high, medium, low visual sensitivity are shown in Table 9:

Table 9, Criteria for assessing visual sensitivity

HIGH	Visual receptor defined as being of high value combined with a high or medium susceptibility to change.
	Visual receptor defined as being of medium value combined with a high susceptibility to change.
MEDIUM	Visual receptor defined as being of high value combined with a low susceptibility to change.
	Visual receptor defined as being of medium value combined with a medium or low susceptibility to change.
	Visual receptor defined as being of low value combined with a high or medium susceptibility to change.
LOW	Visual receptor defined as being of low value combined with a low susceptibility to change.

Magnitude of Change on Visual Receptors

4.7. Professional judgement has been used to determine the magnitude of change on visual receptors as shown in Table 10:

Table 10, Criteria for assessing magnitude of change for visual receptors

HIGH	Major change in the view that has a substantial influence on the overall view.
MEDIUM	Some change in the view that is clearly visible and forms an important but not defining element in the view.
LOW	Some change in the view that is appreciable with few visual receptors affected.
NEGLIGIBLE	No notable change in the view.

¹⁰ Glossary, Page 158, GLVIA, 3rd Edition

5. Significance of Landscape And Visual Effects

- 5.1. The likely significance of effects is dependent on all of the factors considered in the sensitivity and the magnitude of change upon the relevant landscape and visual receptors. These factors are assimilated to assess whether or not the proposed development will have a likely significant or not significant effect. The variables considered in the evaluation of the sensitivity and the magnitude of change is reviewed holistically to inform the professional judgement of significance.
- 5.2. Within Table 11 below, the major effects highlighted in grey are considered to be significant in terms of the EIA Regulations. It should be noted that whilst an individual effect may be significant, it does not necessarily follow that the proposed development would be unacceptable in the planning balance. The cross referencing of the sensitivity and magnitude of change on the landscape and visual receptor determines the significance of effect as shown in Table 11:

Table 11, Significance of landscape and visual effects

		Sensitivity		
		HIGH	MEDIUM	LOW
Magnitude of Change	HIGH	Major	Major	Moderate
	MEDIUM	Major	Moderate	Minor
	LOW	Moderate	Minor	Minor
	NEGLIGIBLE	Negligible	Negligible	Negligible

6. Typical Descriptors of Landscape Effects

6.1. The typical descriptors of the landscape effects are detailed within Table 12:

Table 12, Typical Descriptors of Landscape Effects

MAJOR BENEFICIAL	<p>Substantially:</p> <ul style="list-style-type: none"> - enhance the character (including value) of the landscape; - enhance the restoration of characteristic features and elements lost as a result of changes from inappropriate management or development; - enable a sense of place to be enhanced.
MODERATE BENEFICIAL	<p>Moderately:</p> <ul style="list-style-type: none"> - enhance the character (including value) of the landscape; - enable the restoration of characteristic features and elements partially lost or diminished as a result of changes from inappropriate management or development; - enable a sense of place to be restored.
MINOR BENEFICIAL	<p>Slightly:</p> <ul style="list-style-type: none"> - complement the character (including value) of the landscape; - maintain or enhance characteristic features or elements; - enable some sense of place to be restored.
NEGLIGIBLE	<p>The proposed changes would (on balance) maintain the character (including value) of the landscape and would:</p> <ul style="list-style-type: none"> - be in keeping with landscape character and blend in with characteristic features and elements; - Enable a sense of place to be maintained.
NO CHANGE	<p>The proposed changes would not be visible and there would be no change to landscape character.</p>
MINOR ADVERSE	<p>Slightly:</p> <ul style="list-style-type: none"> - not quite fit the character (including value) of the landscape; - be a variance with characteristic features and elements; - detract from the sense of place.
MODERATE ADVERSE	<p>Moderately:</p> <ul style="list-style-type: none"> - conflict with the character (including value) of the landscape; - have an adverse effect on characteristic features or elements; - diminish a sense of place.
MAJOR ADVERSE	<p>Substantially:</p> <ul style="list-style-type: none"> - be at variance with the character (including value) of the landscape; - degrade or diminish the integrity of a range of characteristic features and elements or cause them to be lost; - change a sense of place.

7. Typical Descriptors of Visual Effects

7.1. The typical descriptors of the visual effects are detailed within Table 13:

Table 13, Typical Descriptors of Visual Effects

MAJOR BENEFICIAL	Proposals would result in a major improvement in the view.
MODERATE BENEFICIAL	Proposals would result in a clear improvement in the view.
MINOR BENEFICIAL	Proposals would result in a slight improvement in the view.
NEGLIGIBLE	The proposed changes would be in keeping with, and would maintain, the existing view or where (on balance) the proposed changes would maintain the general appearance of the view (which may include adverse effects which are offset by beneficial effects for the same receptor) or due to distance from the receptor, the proposed change would be barely perceptible to the naked eye.
NO CHANGE	The proposed changes would not be visible and there would be no change to the view.
MINOR ADVERSE	Proposals would result in a slight deterioration in the view.
MODERATE ADVERSE	Proposals would result in a clear deterioration in the view.
MAJOR ADVERSE	Proposals would result in a major deterioration in the view.

8. Nature of Effects

- 8.1. GLVIA3 includes an entry that states *"effects can be described as positive or negative (or in some cases neutral) in their consequences for views and visual amenity."*¹¹ GLVIA3 does not, however, state how negative or positive effects should be assessed, and this therefore becomes a matter of professional judgement supported by site specific justification within the LVIA.

¹¹ Para 6.29, Page 113, GLVIA 3rd Edition

Town & Country Planning Act 1990 (as amended)
Planning and Compulsory Purchase Act 2004

Cirencester

33 Sheep Street, Cirencester,
Gloucestershire, GL7 1RQ
T 01285 641717
E Cirencester@pegasusgroup.co.uk
Offices throughout the UK

Expertly Done.

DESIGN | ECONOMICS | ENVIRONMENT | HERITAGE | LAND & PROPERTY | PLANNING | TRANSPORT & INFRASTRUCTURE



All paper sources from sustainably managed forests

Pegasus Group is a trading name of Pegasus Planning Group Limited (07277000) registered in England and Wales.

Registered office: 33 Sheep Street, Cirencester, GL7 1RQ

We are ISO certified 9001, 14001, 45001



[Pegasus_Group](#)



[pegasusgroup](#)



[Pegasus_Group](#)

PEGASUSGROUP.CO.UK

Summary of Visual Effects (based on the LVIA Viewpoints 1-9)

- The nature of effects are regarded as adverse unless otherwise stated.
- AC's assessment is based on winter views which correspond with the viewpoint photography in the LVIA.
- Viewpoints are those that are identified in the LVIA.
- The views 1-9 are the appellant's assessment (AC). The lines beneath labelled LPA are the Council's analysis.
- AC's analysis is based on methodology included.

Summary of Landscape Effects (based on the LVIA Viewpoints 1-9)

- Effects are assessed as adverse unless otherwise stated.

Character Area/Type Receptor	Value	Susceptibility	Sensitivity	Magnitude – Year 1	Effect – Year 1	Magnitude – Year 15	Effect – Year 15
NCA 49: Sherwood	Medium	Medium	Medium	Negligible	Negligible	Negligible	Negligible
The Bassetlaw Character Assessment	-	-	-	-	-	-	-
Site only	Medium	Medium	Medium	Medium	Moderate	Medium	Moderate
Beyond site where visible (experiential)	Medium	Medium	Medium	Low	Minor	Low	Minor
SH33 Bothamsall (Includes site)	Medium	Medium	Medium	Low	Minor	Low	Minor
SH34 Sherwood	Medium	Medium	Medium	Negligible	Negligible	Negligible	Negligible
SH40 Babworth	Medium	Medium	Medium	Negligible	Negligible	Negligible	Negligible
SH36 Poulter Valley Meadowlands with Plantations	Medium	Medium	Medium	Negligible	Negligible	Negligible	Negligible
SH35 Bothamsall Estate Farmlands	Medium	Medium	Medium	Negligible	Negligible	Negligible	Negligible
SH32 Clumber (RPG)	High	High	High	Negligible	Negligible	Negligible	Negligible

KEY

- Site Boundary
- Viewpoint Location



All Intellectual Property Rights (including but not limited to copyright) subsisting in or arising out of this drawing and the building works depicted are owned by Pegasus Planning Group Ltd (Pegasus Group) and may not be copied, adapted, disseminated, redistributed, reproduced and/or otherwise used without a written licence. Pegasus Group accepts no liability for any use of this drawing other than for its original purpose and by the original client except in circumstances where approval for use has been provided by Pegasus Group in writing. Use only written dimensions. Drawing prepared for planning application purposes only. Do not scale (or use) for construction, sales or any other purpose. Any queries to be reported to Pegasus Group for clarification. Copyright © Pegasus Planning Group, Limited 2025. Use of this drawing is subject to the Terms & Conditions available @ pegasusgroup.co.uk. © Crown copyright and database rights 2025. Ordnance Survey, AC000080822.

REV	DATE	DESCRIPTION

VIEWPOINT LOCATION PLAN

LAND ADJACENT TO THE A614, WORKSOP

LONGWORTHY LIMITED

DATE	SCALE	DRAWN	APPROVED
05/12/2025	1:15,000@A3	NC/CS	AC

SHEET	REV	N	O	0.4KM
-	A	▲	└───┘	

DRAWING NUMBER
P25-2880_EN_01



Microsoft, Vantor