



Proposed solar farm and battery energy storage system on land adjacent to the A614, Worksop, S80 3PA

LANDSCAPE AND VISUAL IMPACT ASSESSMENT

ADDENDUM 1: Views from within Clumber Park

July 2024

## Introduction

---

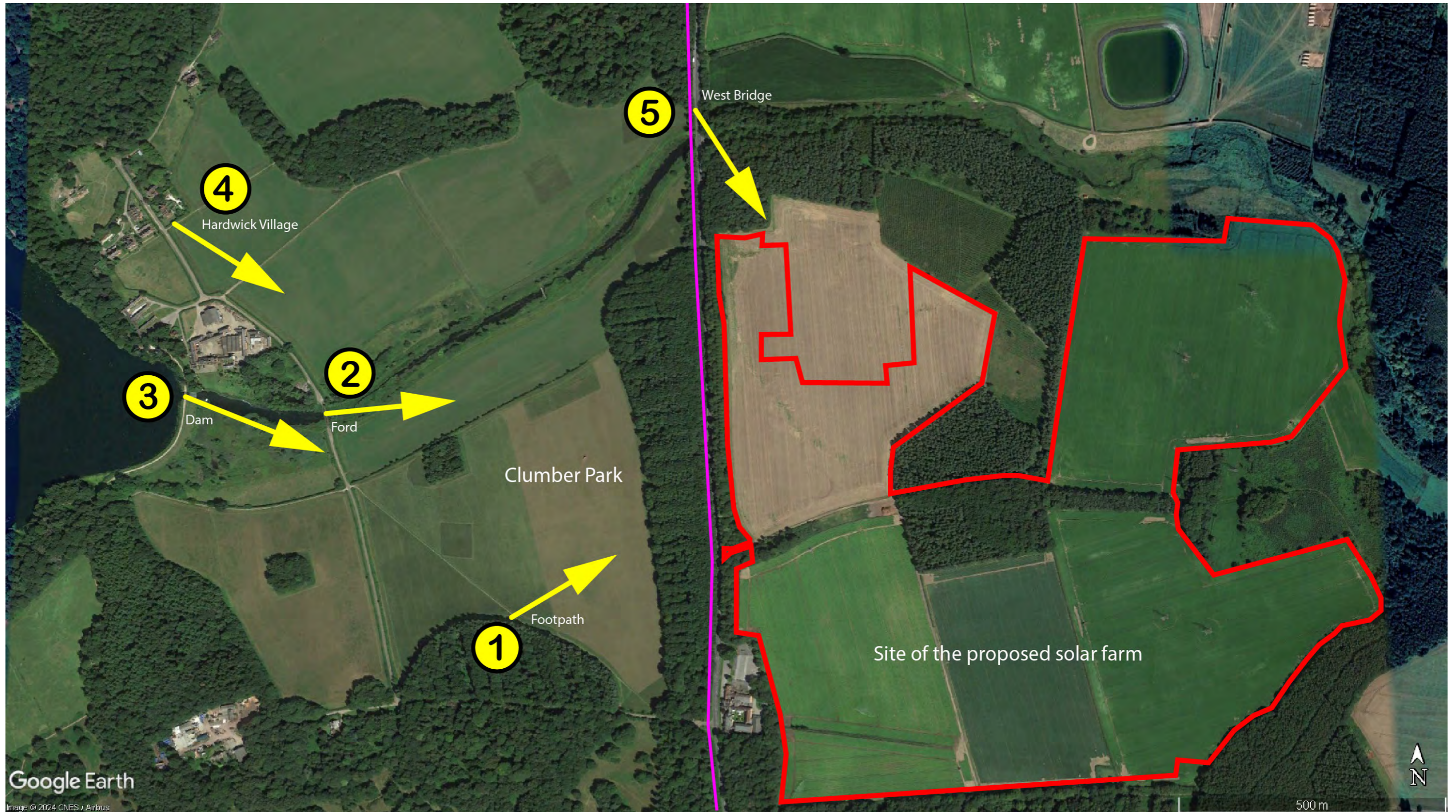
This report has been produced as an addendum to the Landscape and Visual Impact Assessment (LVIA) for the proposed solar farm and battery energy storage system on land adjacent to the A614, Worksop, S80 3PA. It has been produced to allay concerns that the Proposed Development might be visible from within Clumber Park, which is a Grade 1 Historic Park and Garden, within which lie numerous historical assets. Clumber Park is also an important visitor attraction for those wishing to appreciate its history, scenery and wildlife. It is important that the proposed development does not adversely affect the visual amenity of visitors.

The park and garden is enclosed by mature, deep and dense tree belts which block views out to the wider countryside, even in winter. This screening feature is reinforced by a similar block of woodland on the east side of Blyth Road (the A614) which separates the Site from Blyth Road. Screen planting will also be provided within Proposed Development.

Views from within the park and garden were not included within the LVIA because the Site is already effectively screened from within the park and garden. This report presents photographs from within Clumber Park, orientated towards the site, to illustrate that the proposed development will not be visible from within the park and garden and will have no effect on its appreciation from within Clumber Park.

Viewpoints have been chosen in collaboration with the National Trust from locations where the Proposed Development would potentially be most prominent and from the more sensitive key assets. The viewpoints are located on Figure 1.

Figure 1: Viewpoint Locations



**Viewpoint 1: From a footpath which crosses a high point on the southern boundary of the estate**

**The Site lies behind the trees and behind a similar tree belt on the east side of the A614 Blyth Road**



Viewpoint 1

Direction of view: Northeast

Distance to nearest site boundary: 460m

Elevation: 56 m AOD

Date photo was taken: 27.06.2024

The Site lies behind the trees



Viewpoint 2

Direction of view: East

Distance to nearest site boundary: 773m

Elevation: 31m AOD

Date photo was taken: 27.06.2024

The Site lies behind the trees



Viewpoint 3

Direction of view: East

Distance to nearest site boundary: 1050m

Elevation: 41m AOD

Date photo was taken: 27.06.2024

The Site lies behind the trees



Viewpoint 4

Direction of view: Southeast

Distance to nearest site boundary: 1060m

Elevation: 44m AOD

Date photo was taken: 27.06.2024

West Bridge lies behind the Armco barrier. The Site lies at a higher level behind 200m depth of woodland which includes evergreens



Viewpoint 5

Direction of view: Southeast

Distance to nearest site boundary: 120m

Elevation: 32m AOD

Date photo was taken: 27.06.2024